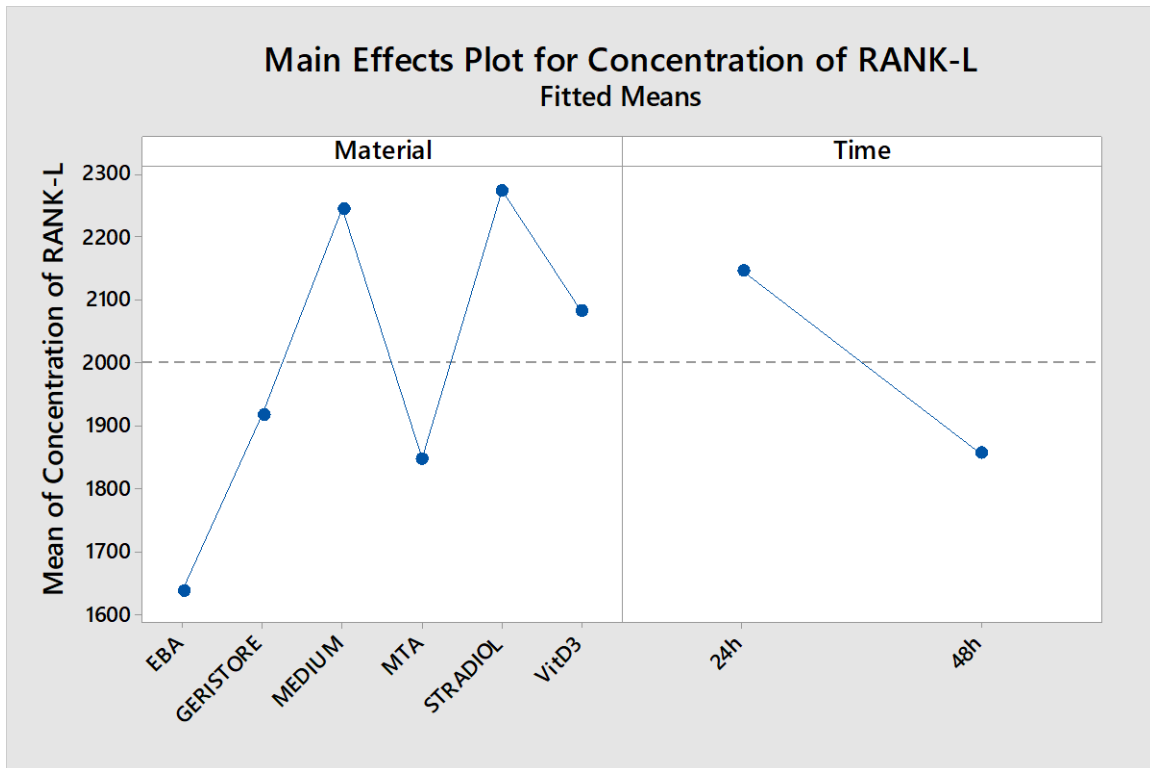


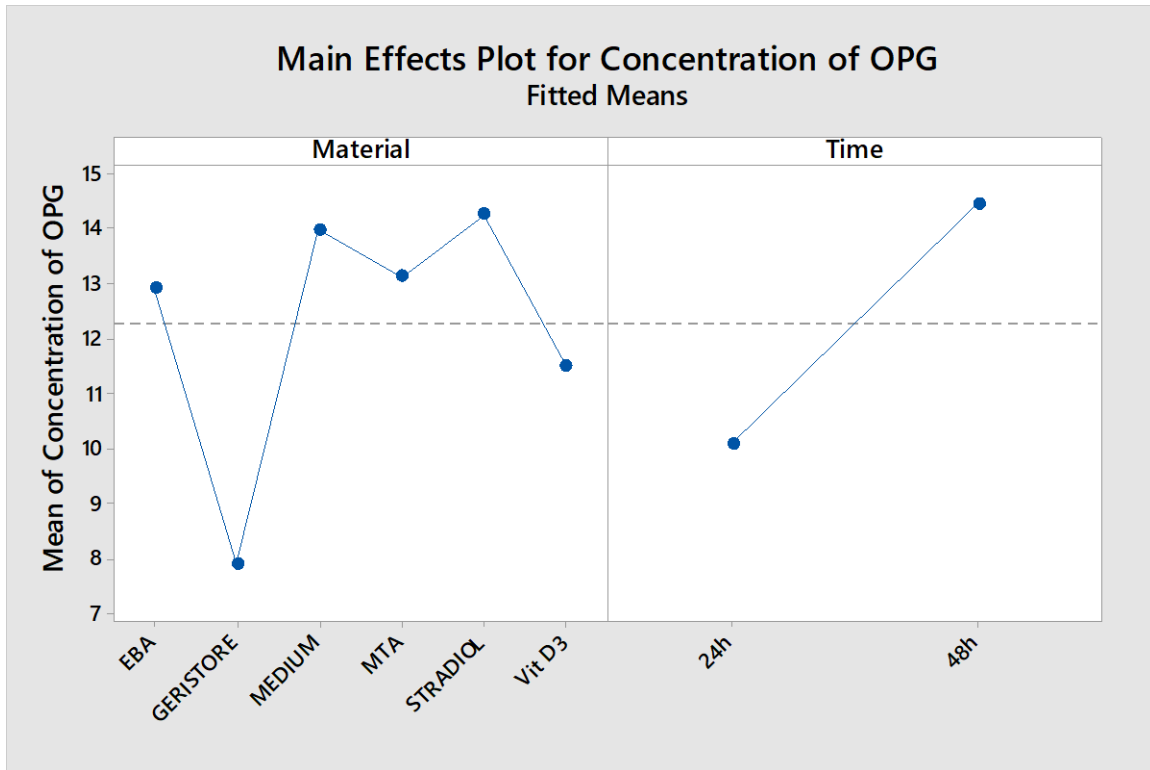
Appendix 1: The ANOVA results of the main effects of material and time together with their interaction effects (material*time) for concentration of RANK-L. Degrees of freedom (DF), adjusted sums of squares (Adj SS), adjusted mean squares (Adj MS)

Source	DF	Adj SS	Adj MS	F-Value	P-Value
Materials	5	1220229	244046	4.93	0.011*
Time	1	513724	513724	10.37	0.007*
Materials*Time	5	113522	22704	0.46	0.800
Error	12	594319	49527		
Total	23	2441793			

* identifies the significant terms



Appendix 2: Main effects of material and time on the means of RANK-L concentrations



Appendix 3: Main effects of material and time on the means of OPG concentration

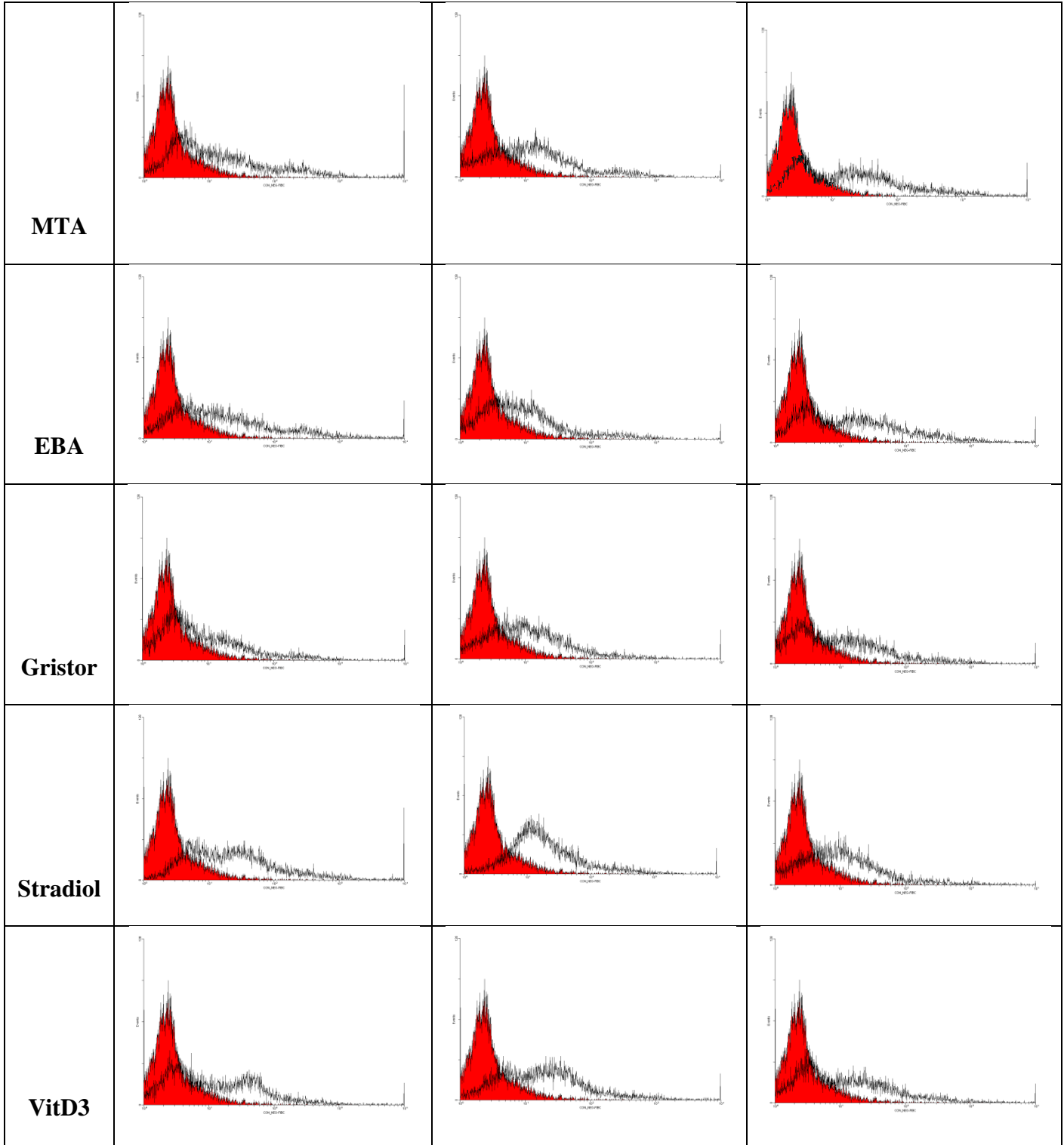
Appendix 4: The ANOVA results of the main effects of material and time together with their interaction effects (material*time) for concentration of OPG. Degrees of freedom (DF), adjusted sums of squares (Adj SS), adjusted mean squares (Adj MS)

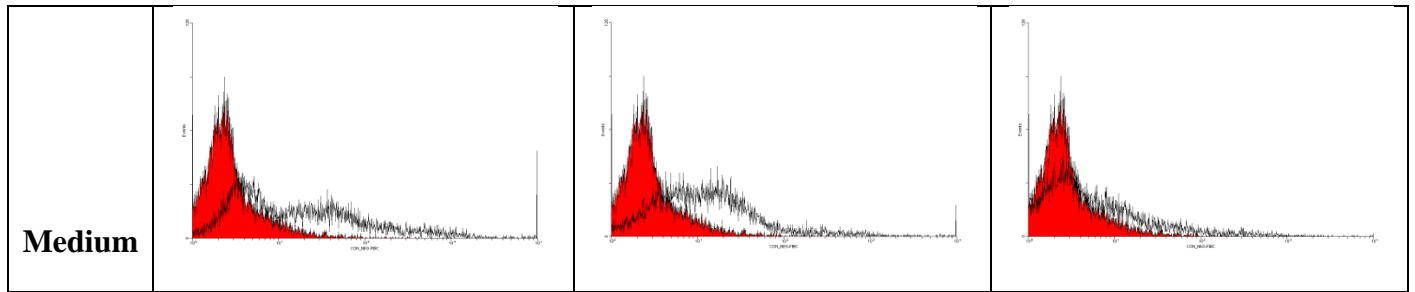
Source	DF	Adj SS	Adj MS	F-Value	P-Value
Materials	5	110.409	22.082	19.32	0.000*
Time	1	114.114	114.114	99.84	0.000*
Materials*Time	5	7.286	1.457	1.27	0.336

	24 h	48 h	72 h
--	-------------	-------------	-------------

Error	12	13.716	1.143	
Total	23	245.526		

* identifies the significant terms



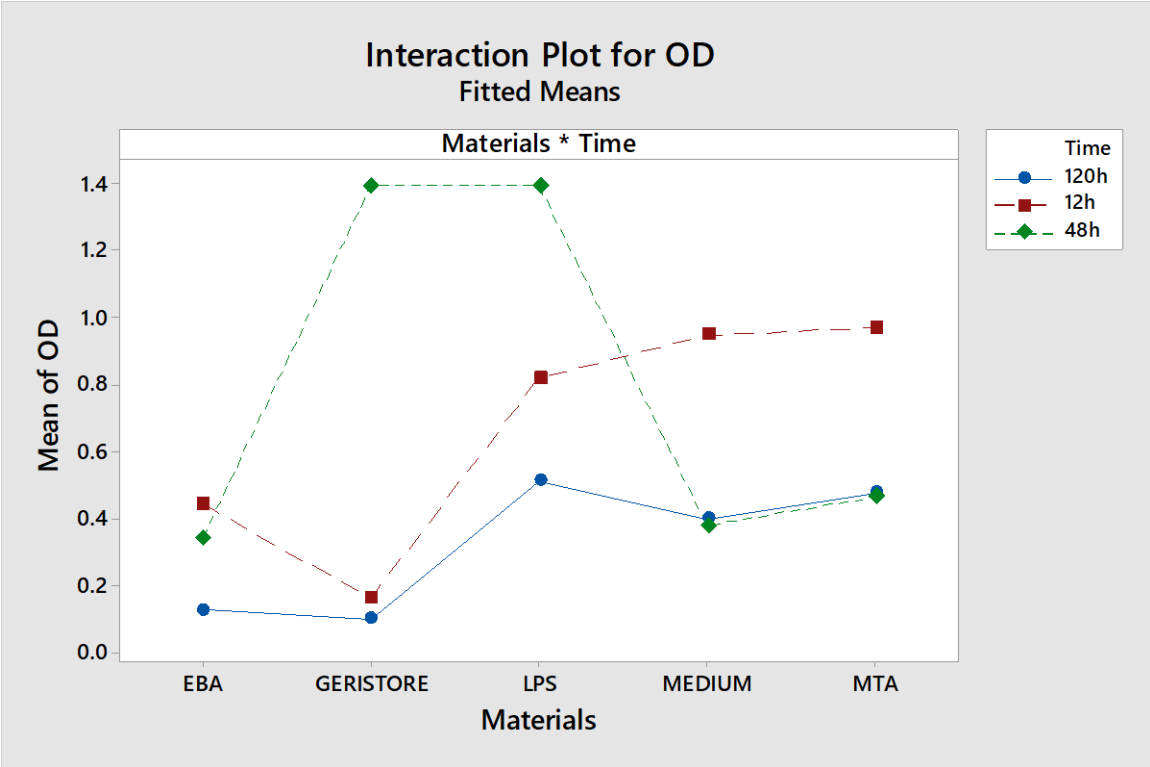


Appendix 5: The expression densities of RANK of monocytes (open histograms) and isotype control (full histograms).

Appendix 6: The ANOVA results of the main effects of material and time together with their interaction effects (material*time) in the MTT assay. Degrees of freedom (DF), adjusted sums of squares (Adj SS), adjusted mean squares (Adj MS)

Source	DF	Adj SS	Adj MS	F-Value	P-Value
Materials	4	7.623	1.905	5.32	0.003*
Time	2	5.434	2.717	7.59	0.003*
Materials*Time	8	11.099	1.387	3.88	0.004*
Error	25	8.950	0.358		
Total	39	32.425			

* identifies the significant terms



Appendix 7: Interaction plots of material and time in MTT assay between different materials.